

## Page 2

CPU, USB interface, Expansion connectors

## Page 3

JTAG interface and USB to UART Bridge,  
Power supply

## Page 4

Audio interface

## Page 5

LEDs and Keys, RGB-LED, touch sensors,  
Analog input and XBee interface

UL = UnLoaded = normally not mounted component.

Default jumper settings are indicated in the schematic.  
However, always check jumper positions on actual boards  
since there is no guarantee that all jumpers are in default place.

### Rev 1.1

Added R104 and corrected JTAG connections  
for OpenOCD compatibility.

### Rev 1.0

Original revision



© Embedded Artists AB

TITLE: LPC21xx Education Board v1.1

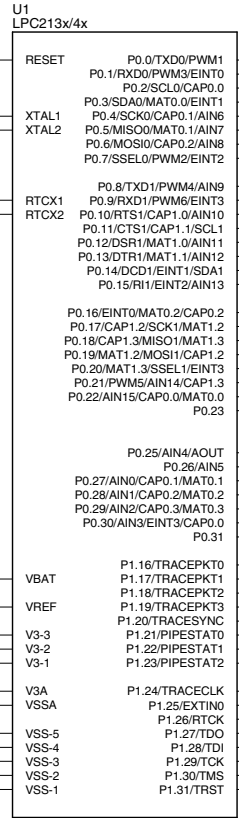
Document Number:

REV:

Date: 2009-04-14 22:11:00

Sheet: 1/5

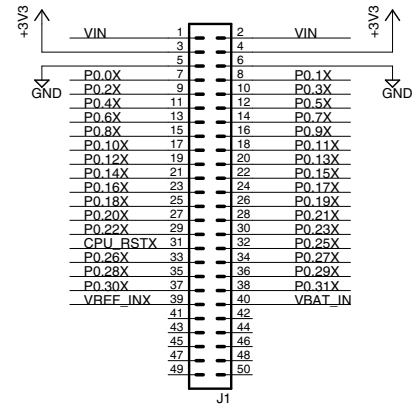
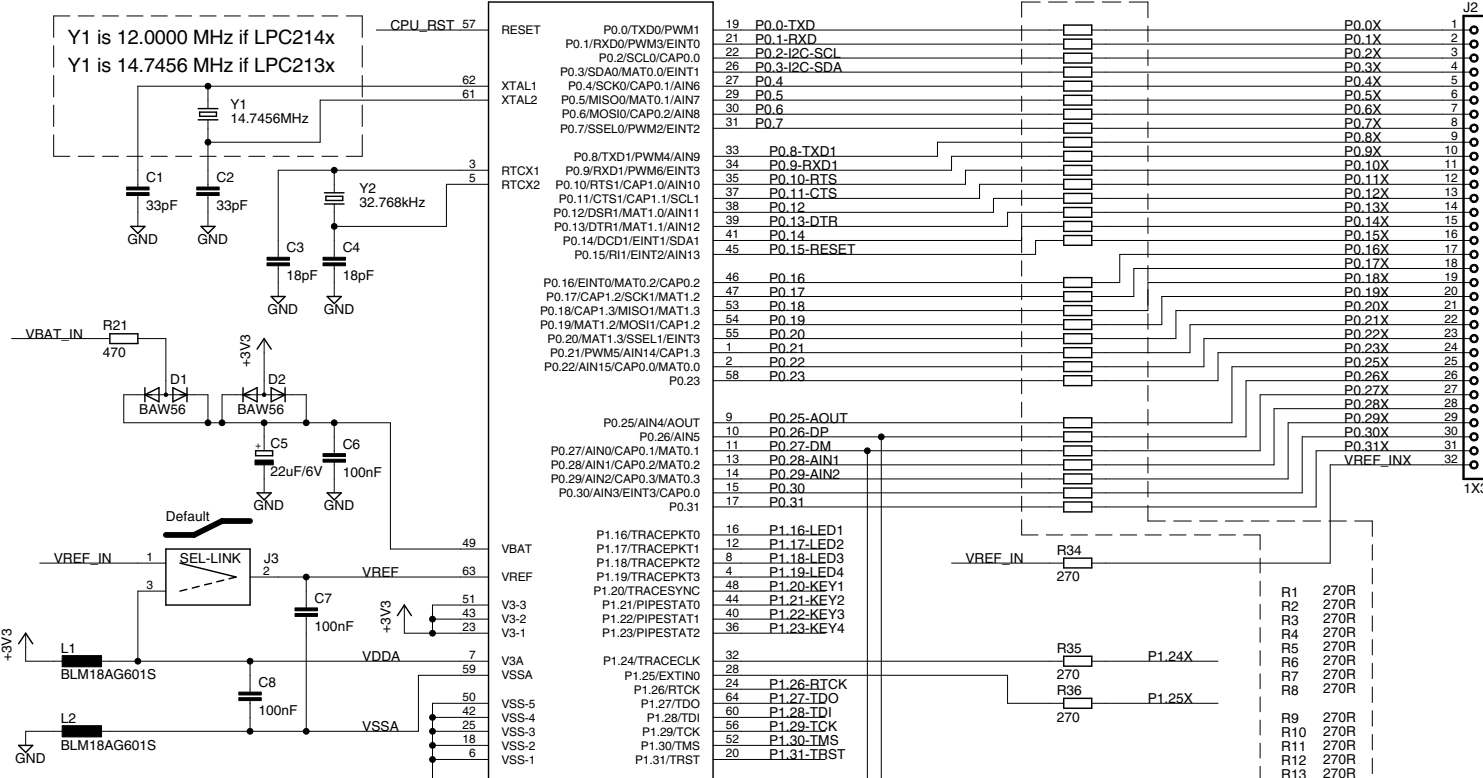
# CPU: LPC213x/4x



Y1 is 12.0000 MHz if LPC214x  
Y1 is 14.7456 MHz if LPC213x

# Expansion Connector for Bread Board

# Expansion Connector



- R1 270R
- R2 270R
- R3 270R
- R4 270R
- R5 270R
- R6 270R
- R7 270R
- R8 270R
- R9 270R
- R10 270R
- R11 270R
- R12 270R
- R13 270R
- R14 270R
- R15 270R
- R16 270R
- R17 270R
- R18 270R
- R19 270R
- R20 270R
- R21 270R
- R22 270R
- R23 270R
- R24 270R
- R25 270R
- R26 270R
- R27 270R
- R28 270R
- R29 270R
- R30 270R
- R31 270R
- R32 270R

# USB Interface

Only mounted when U1 is LPC214x

(C) Embedded Artists AB

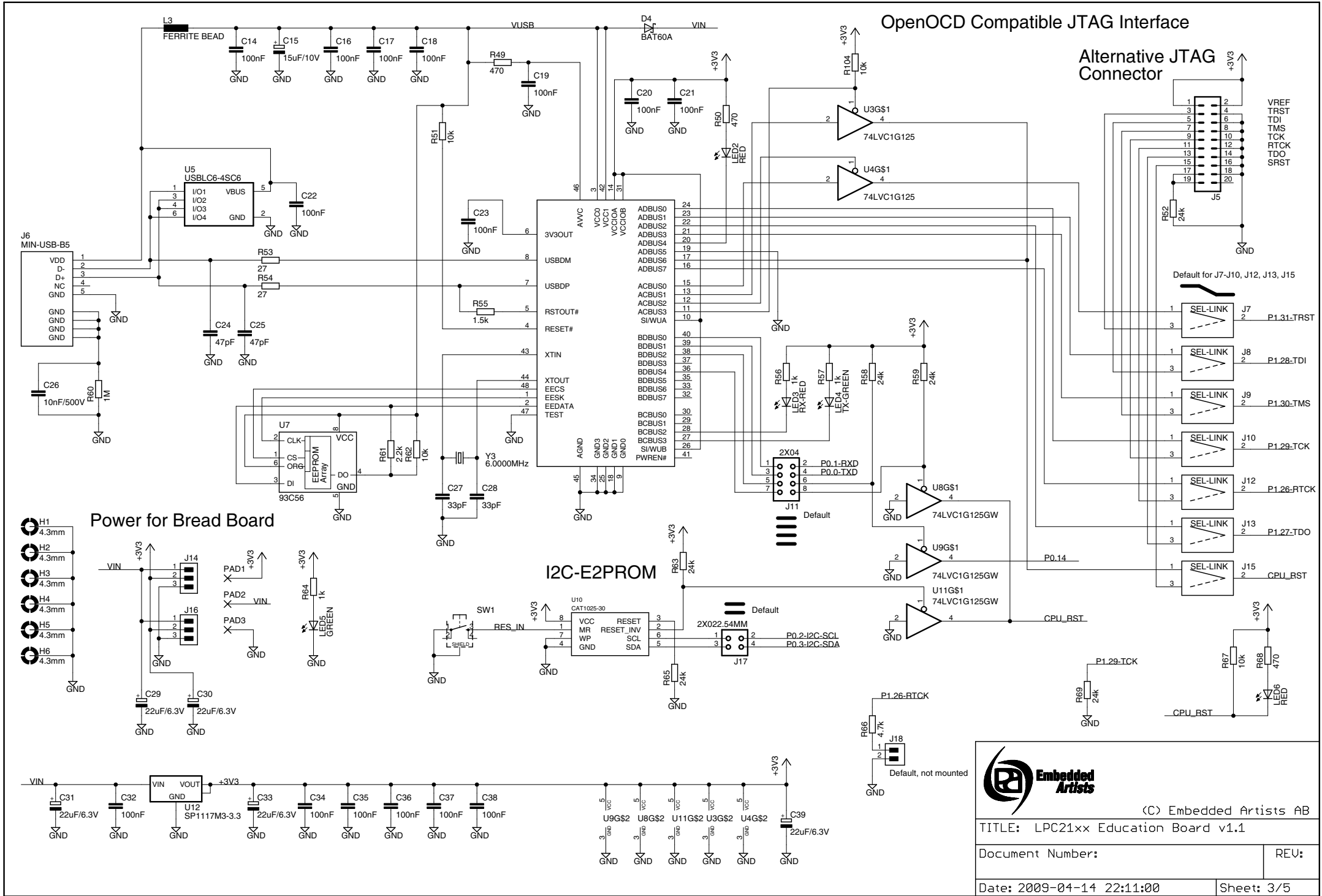
TITLE: LPC21xx Education Board v1.1

Document Number: \_\_\_\_\_ REV: \_\_\_\_\_

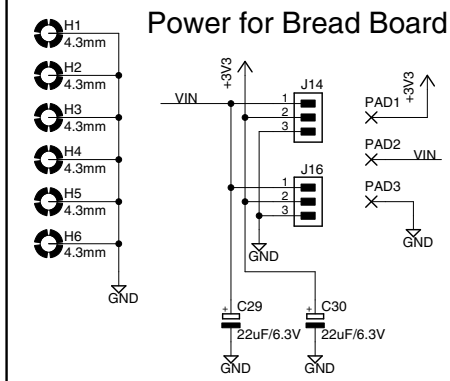
Date: 2009-04-14 22:11:00 Sheet: 2/5

# OpenOCD Compatible JTAG Interface

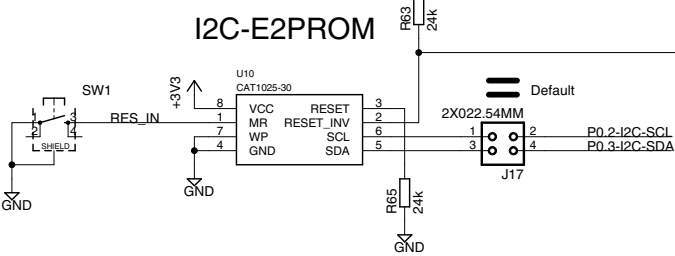
## Alternative JTAG Connector




### Power for Bread Board



### I2C-E2PROM



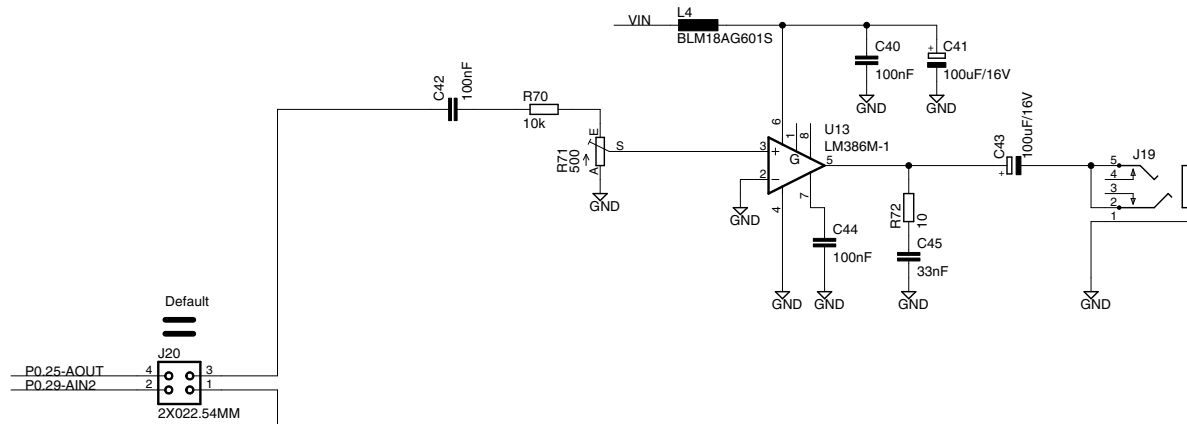


(C) Embedded Artists AB

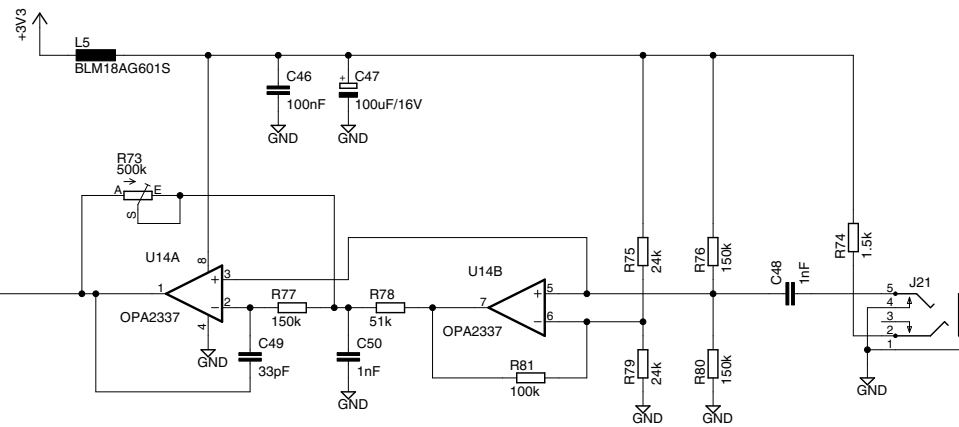
TITLE: LPC21xx Education Board v1.1

Document Number:	REV:
Date: 2009-04-14 22:11:00	Sheet: 3/5

## Speaker amplifier



## Microphone input



(C) Embedded Artists AB

TITLE: LPC21xx Education Board v1.1

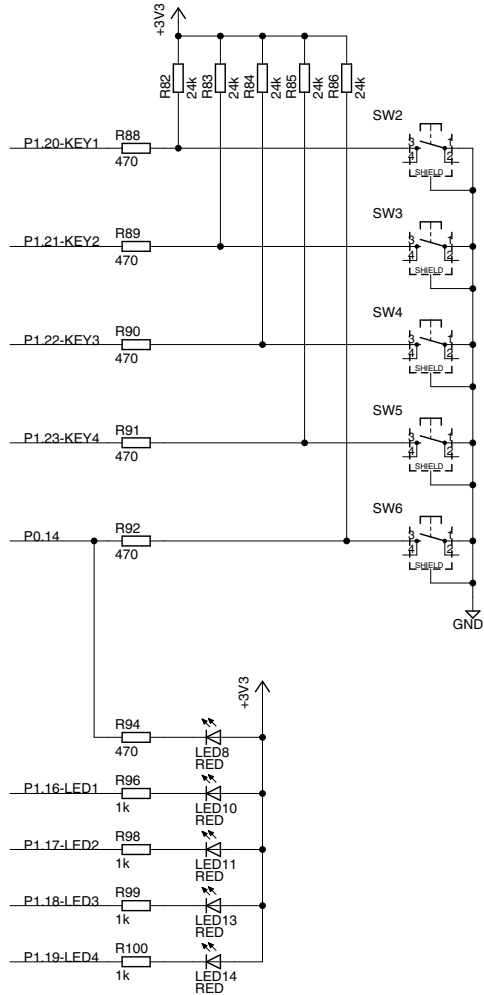
Document Number:

REV:

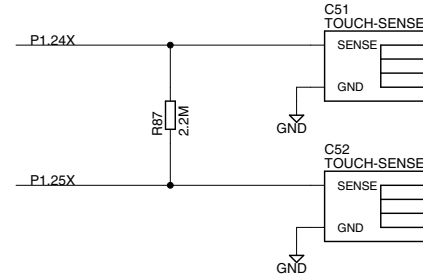
Date: 2009-04-14 22:11:00

Sheet: 4/5

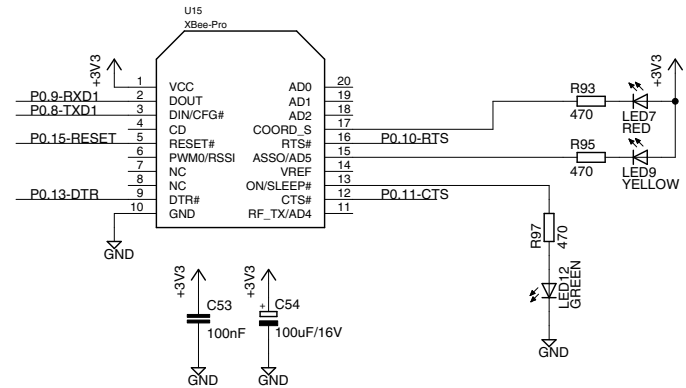
### Push-buttons and LEDs



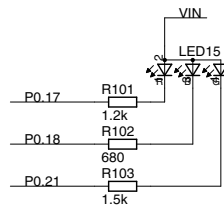
### Touch-sensor Keys



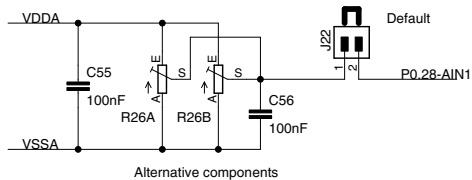
### XBee(TM) RF module



### RGB-LED



### Analog input



(C) Embedded Artists AB

TITLE: LPC21xx Education Board v1.1

Document Number: REV:

Date: 2009-04-14 22:11:00 Sheet: 5/5